



# PRIMA Astrometric Data Reduction Software (ADRS)

Jeroen de Jong, ESO  
16 October 2006  
ADASS Conference, Tucson AZ

## **PRIMA Astrometric Operations and Software (PAOS) Consortium:**

PIs: Andreas Quirrenbach, Didier Queloz, Thomas Henning  
ADRS Manager: Nicholas Elias  
Heidelberg: Sabine Reffert, Rainer Köhler, Ralf Launhardt, Johny Setiawan,  
Bob Tubbs  
Geneva: Francesco Pepe, Denis Mégevand, Damien Ségransan, Luc Weber  
ESO support: Françoise Delplancke, me, Ralf Palsa, Pascal Ballester

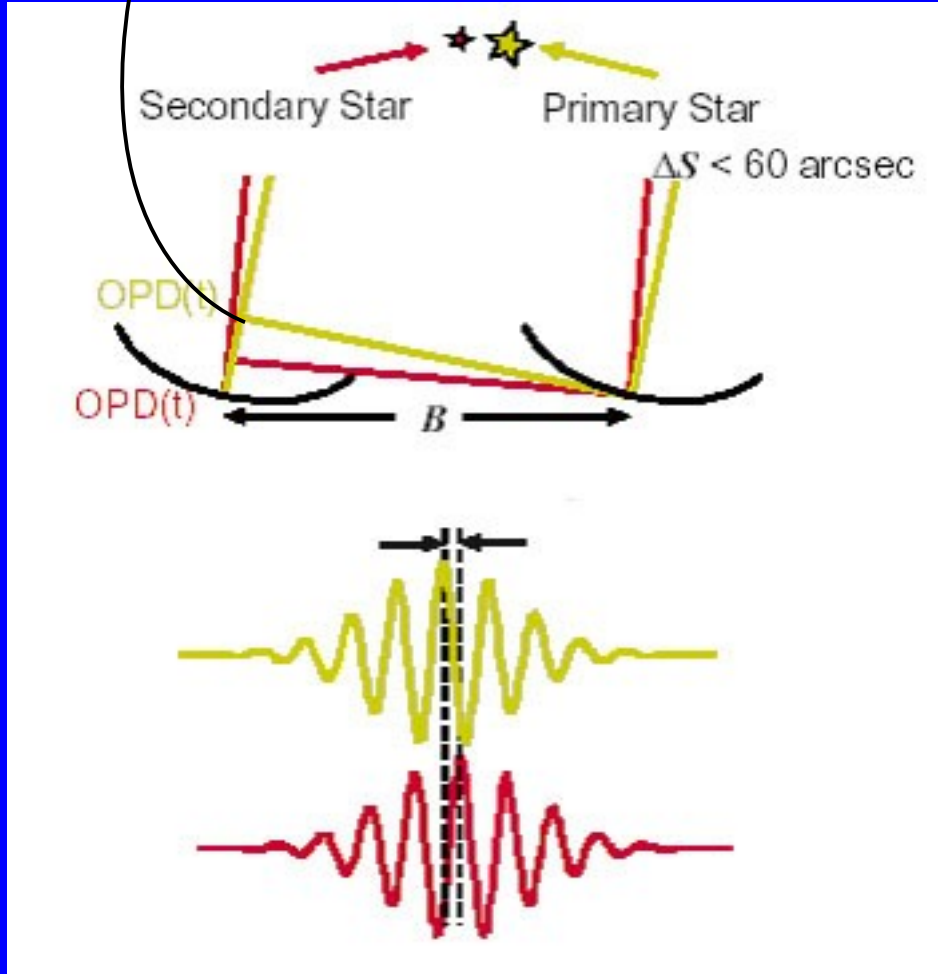


# Introduction

- **PRIMA:** Phased Referenced Imaging and Micro-Arcsecond Astrometry instrument for the Very Large Telescope Interferometer (VLTI)
- Main goal of PRIMA astrometry: A search for extra-solar planets and the characterization of their orbits
- This goal requires *10 micro-arcsec* accuracy over a time range of up to several years
- Systematic analysis for long-term trends in the data needed

# Principle

DOPD



## Differential Astrometry:

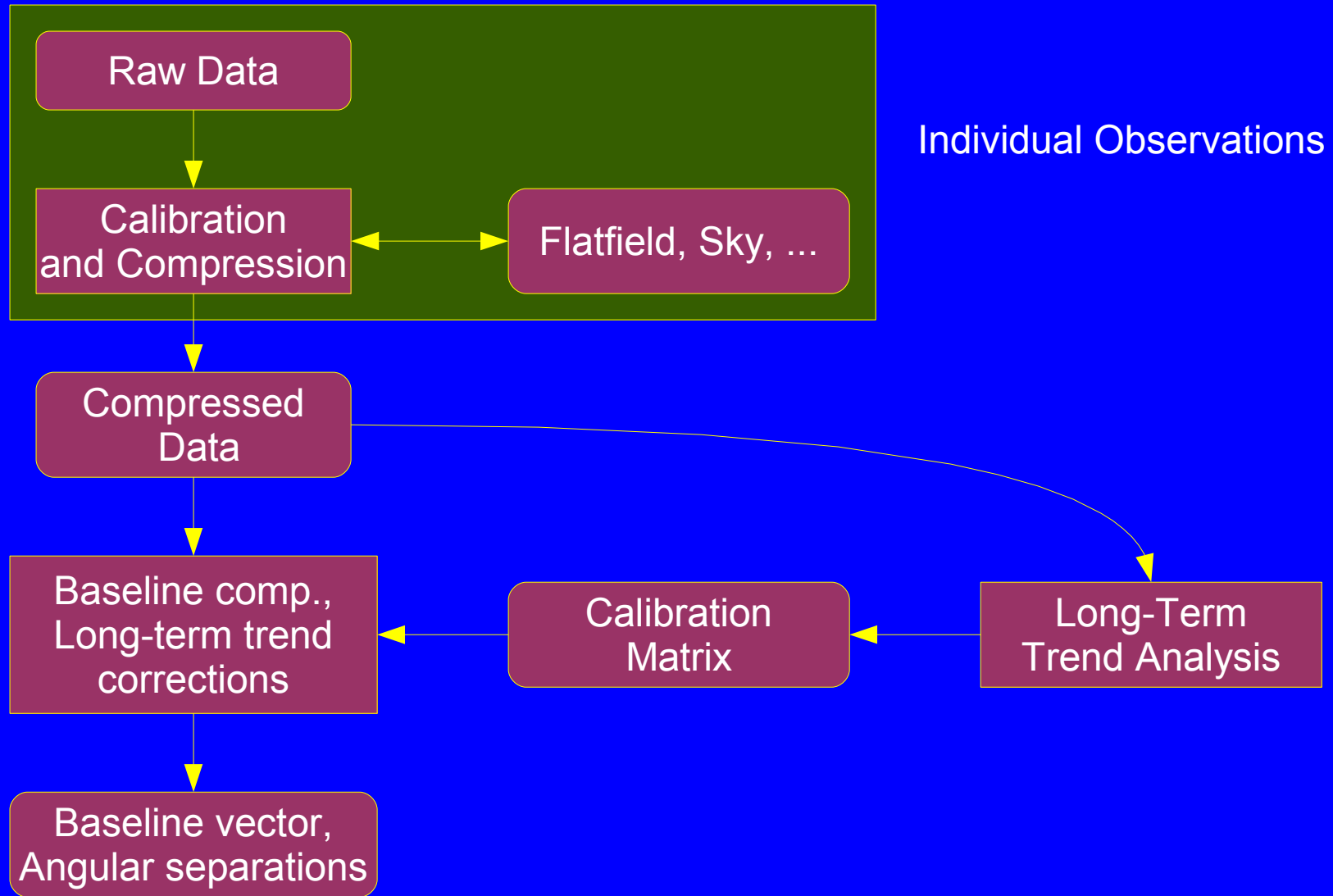
Need to measure the vacuum *Differential Optical Path Difference (DOPD)* and *Baseline (B)* to obtain  $\Delta S$ :

$$\text{DOPD} = \Delta S \cdot B$$

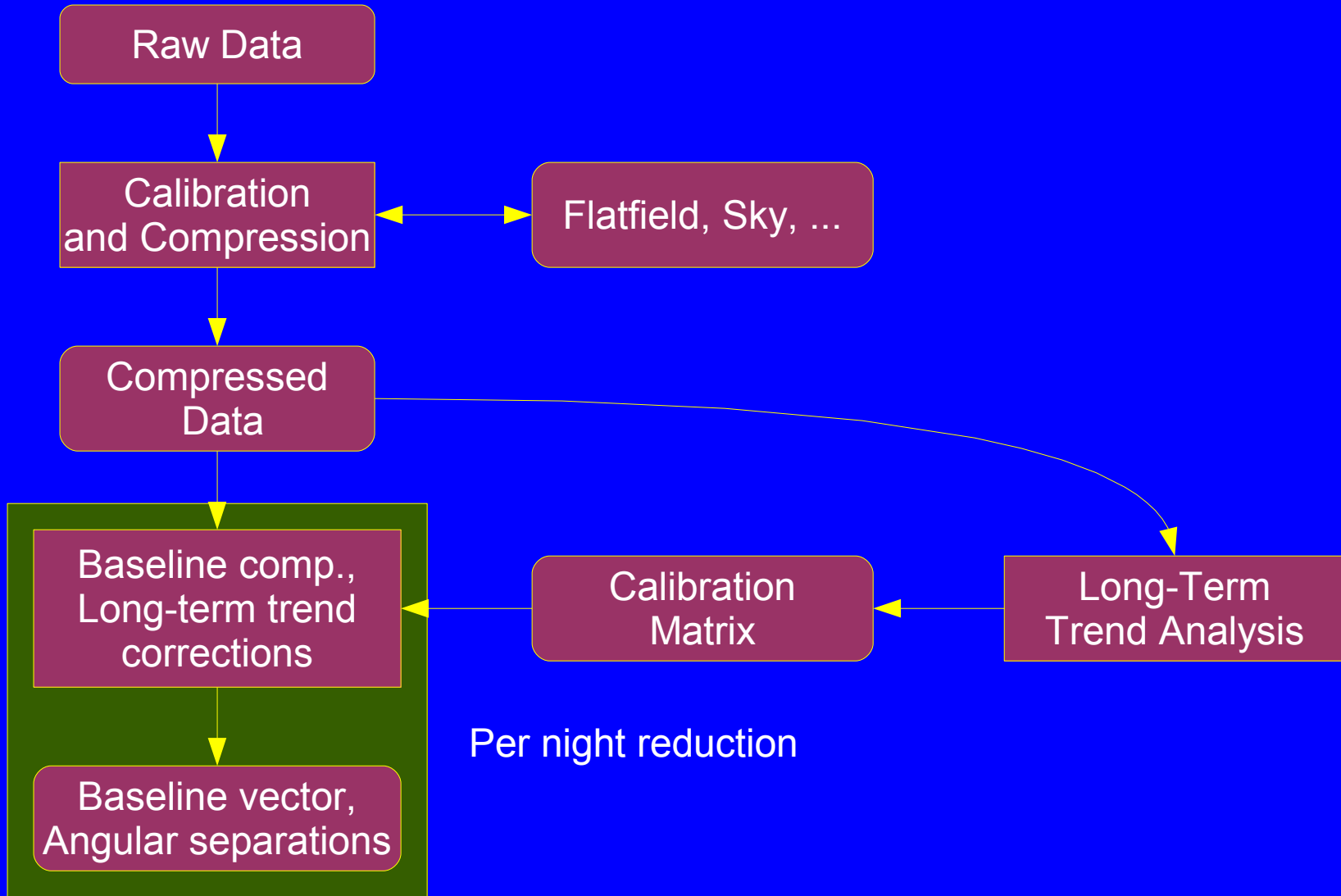
Corrections needed for:

- Atmospheric effects
- Long-term changes in the baseline
- Long-term trends in the VLT1 optics and mechanics
- Earth rotation effects
- Detector effects
- .
- Required DOPD accuracy: **5 nm**
- .

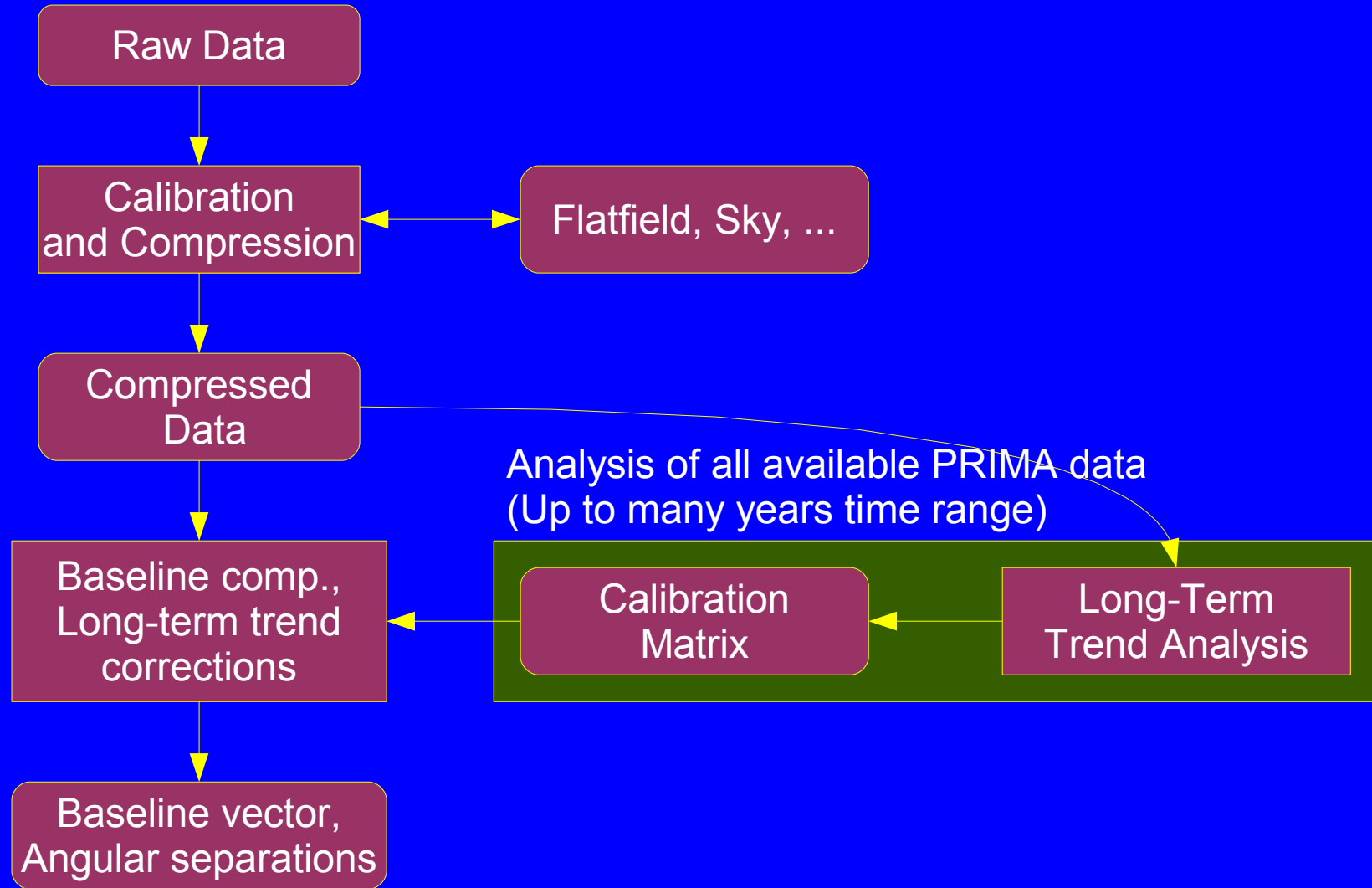
# Data Reduction Overview



# Data Reduction Overview



# Data Reduction Overview





# Data Products

- Raw Data: Fringe positions and DOPD metrology at up to 8 Khz rate, flatfields, sky background, ..., *environmental sensor data*
- Compressed Data: same information at 1 second rate and calibrated for detector effects.
- Final products: long-term trend corrected DOPDs, baseline vectors and angular separations.

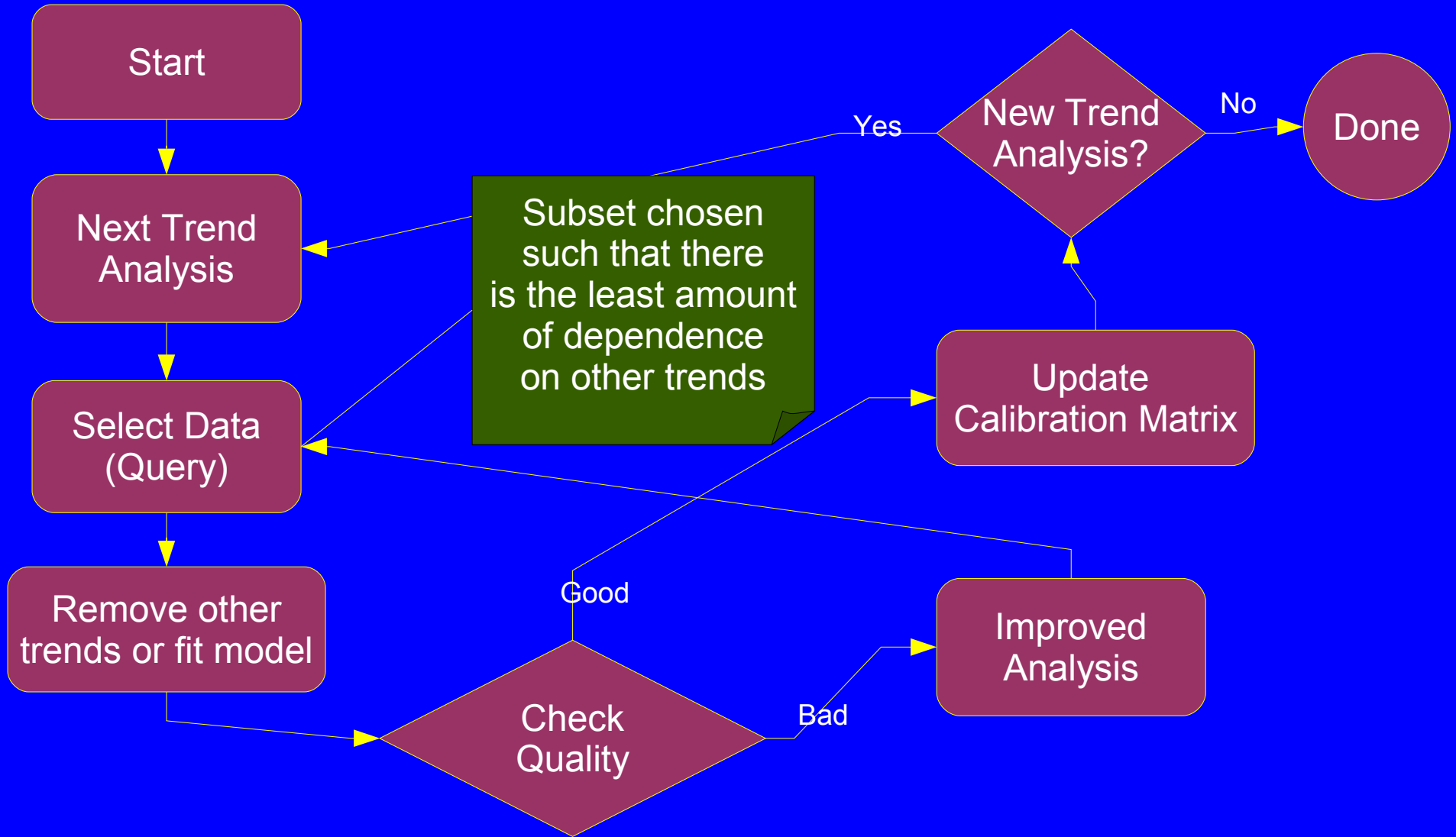


# Long-Term Trend Analysis

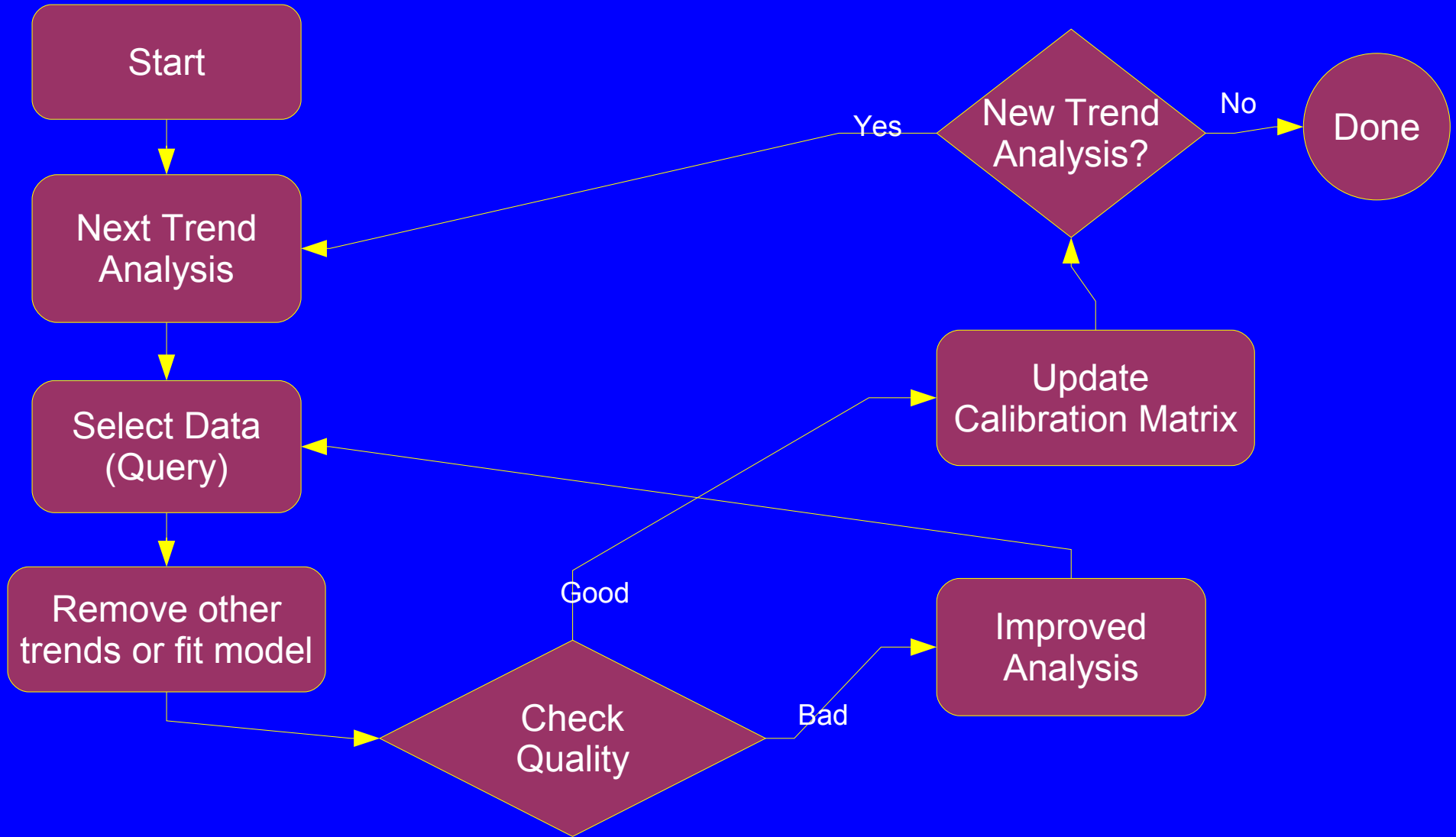
- Systematic analysis of all PRIMA compressed data and environmental sensor readings (weather, VLTI environment, optics and mechanics).
  - Interactive identification of trends
  - Recipes will be developed for fitting those trends and producing correction coefficients
  - Automatic **Data Analysis Facility (DAF)** executes all those recipes
  - Results will be stored in the **Calibration Matrix**



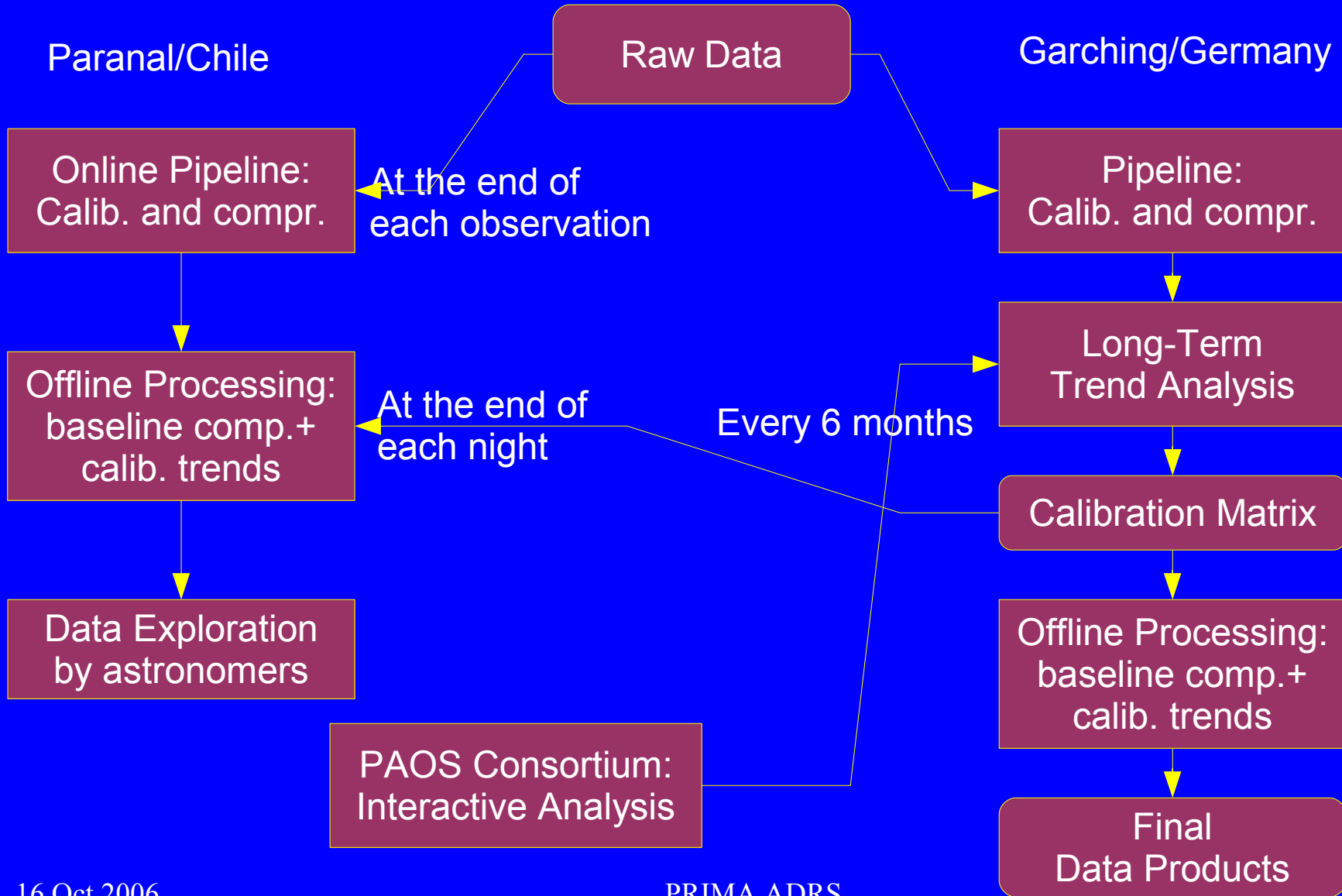
# Automatic Trend Fitting (DAF)



# Automatic Trend Fitting (DAF)



# Implementation at ESO





# Timeline

- Design is being finalized: Final Design Review in January 2007
- All reduction recipes (online pipeline and offline processing) are defined
- A simulator for raw data is available and prototyping has started
- First production release of all modules is planned at the end of 2007



# Problems

- Long-term trend analysis as currently planned depends on the expertise of the PAOS consortium (for the manual identification of trends) as long as available.
- We have no final statistical analysis to assure that no more unknown trends are present in the scientific data.
- The trend analysis queries may become too complicated for our current tools



# Conclusion

- We do not expect problems with the pipeline and offline processing (recipes are defined).
- We will have a working ADRS before commissioning.
- We keep in mind that the long-term trend analysis may have to be automated with a sophisticated statistical analysis (data mining)
- *Any input from projects with similar long-term analysis procedures would be welcome*